



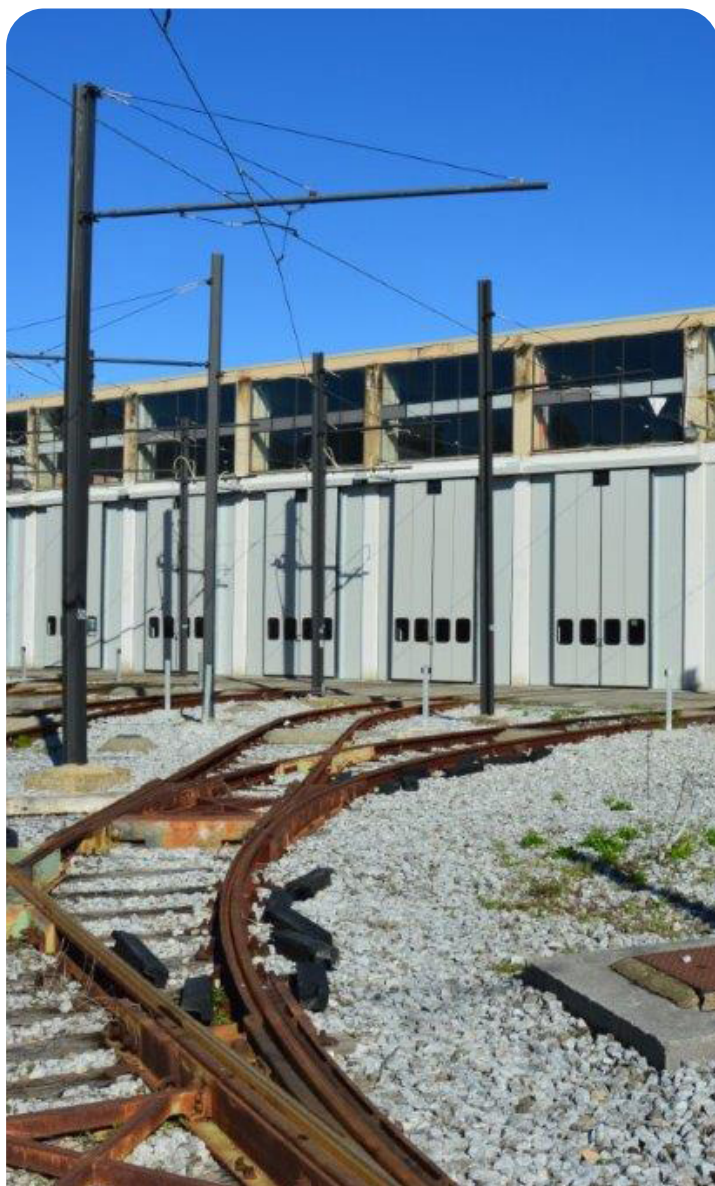
---

INDUSTRIAL

# Folding doors

**Safety and versatility together.**

---



# A rigid, ultra insulating solution.

The GLG folding doors are built with sandwich panels in painted steel or aluminum, with an injection of CFC-free polyurethane foam to ensure even more efficient insulation.

Overview ↗



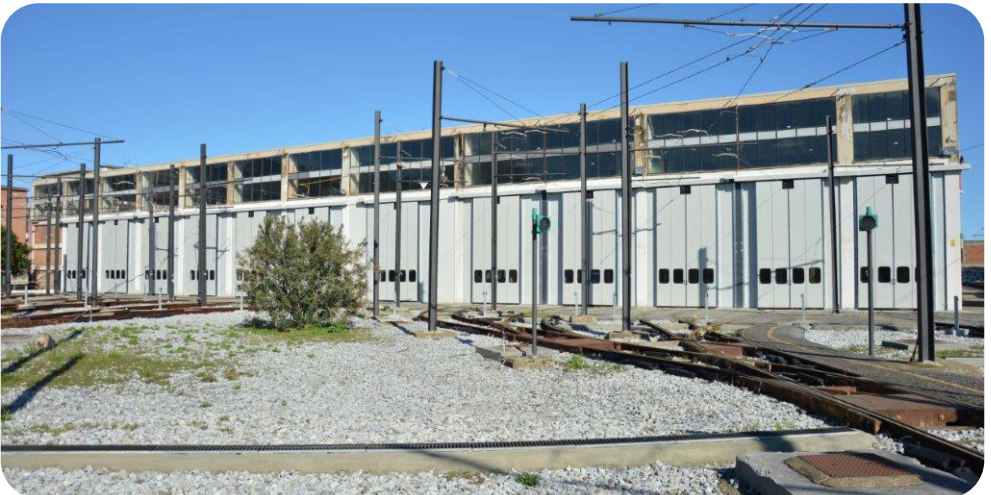
## Features

- 100% safe**
- Wear-free**
- Possibility to close large spaces**
- Functionality and lightness**
- Quick assembly**
- Small footprint**
- Reduced maintenance**
- Thermal insulation**
- Sound insulation**

---

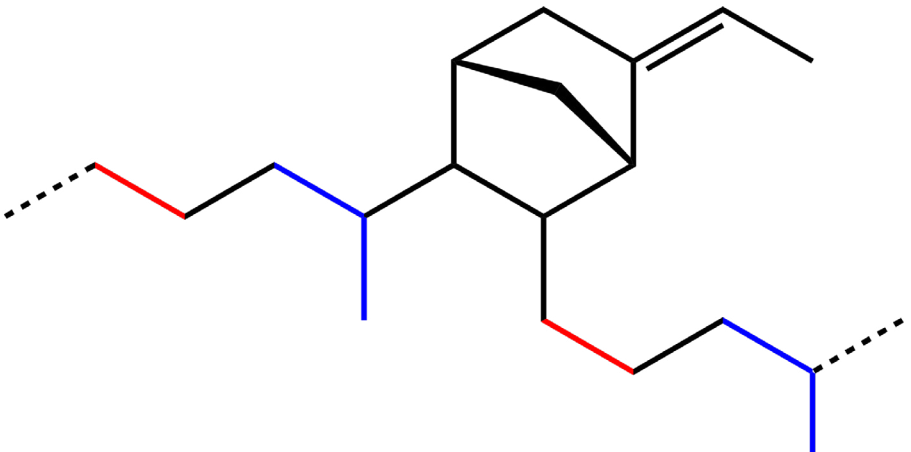
## Applications

- Transportation**
- Logistics**
- Agribusiness**
- Shipyards**
- Railroads**
- Airports**



# Ultra safe and lightweight

They guarantee maximum thermal and acoustic insulation, while special EPDM seals and nylon brushes on the closing profiles ensure a perfect seal.



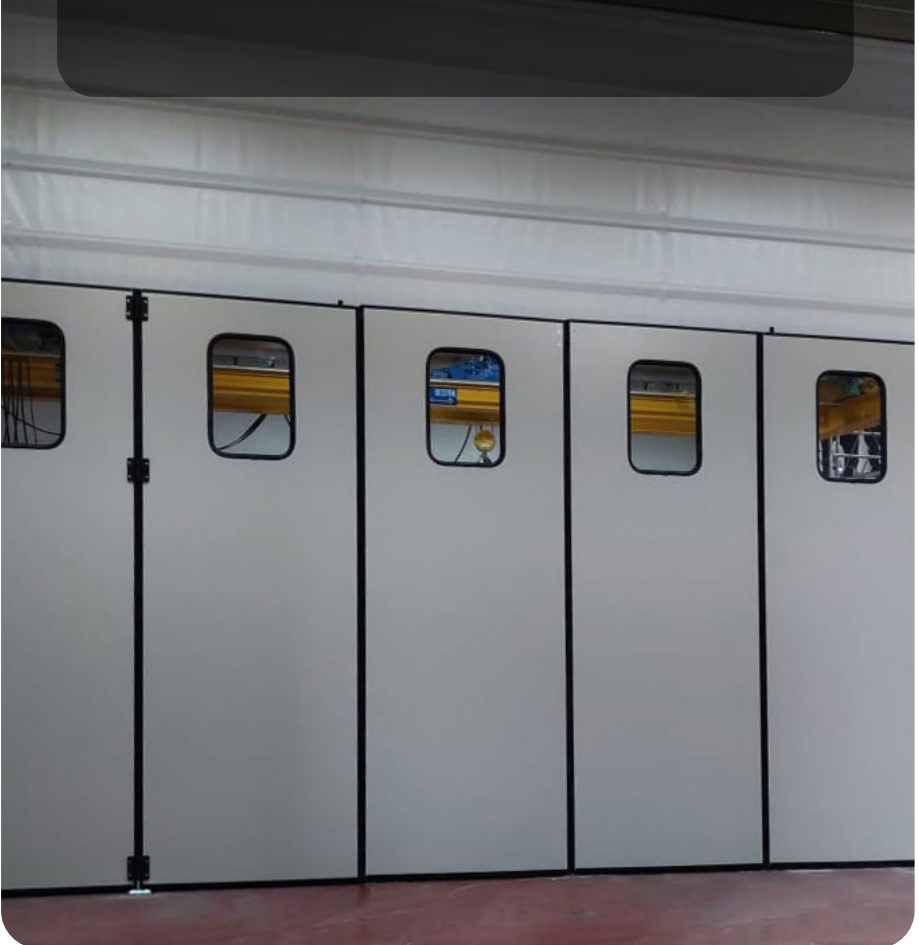
Different possibilities of customization

**Portholes, ventilation grilles and special windows, designed and customized hinges, pedestrian doors with the function of emergency exits or to facilitate frequent passage without opening the door if not strictly necessary.**

# For a better view

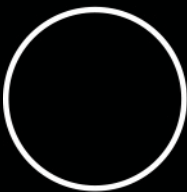
We make portholes of different shapes and sizes according to the needs of use of its industrial door.

- Square and rectangular portholes with black EPDM rubber seal with rounded corners
- Circular portholes with black EPDM rubber seal
- Square and rectangular portholes with aluminium profile at right angles



All the doors you want

**The classic type for the book door without floor guide is 2+2, that is two doors that open on one side and two that open on the other. The maximum number of doors per side is 4 and you can pair all the possibilities.**



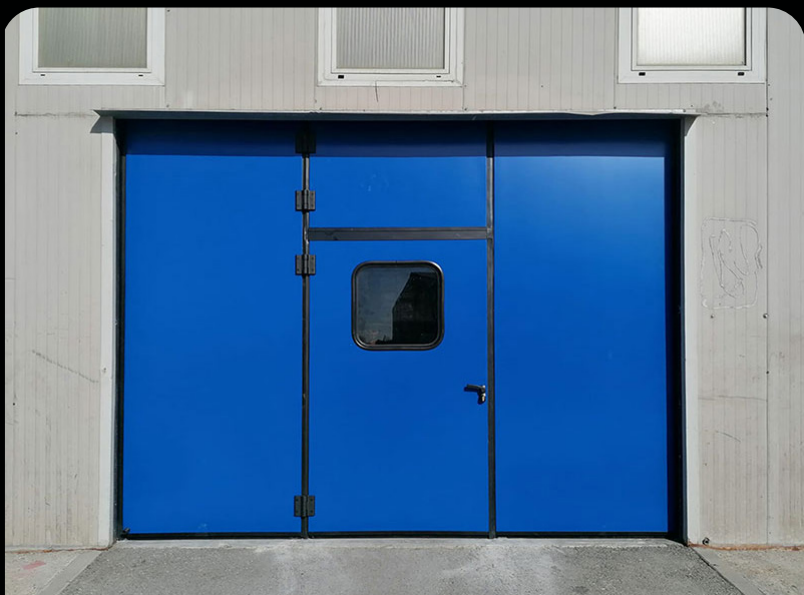


An additional entrance

# Pedestrian pedestrian

On request, it is possible to have a door cut with the aluminium top stop profile, equipped with a 2-point anti-panic handle (high and low), with cylinder and external handle.

The pedestrian door is a practical solution to access quickly, without where to open the entire door all the time.





**Folding doors are packed according to your space requirements. This allows the closure of very large compartments with a minimal lateral footprint.**



STRUCTURE		FOLDING DOOR
Sizing	Width up to 20000 mm x Height up to 6000 mm	
Panels	Thickness of 52 mm, composed of internal perimeter frame in galvanized steel, insulated with injected polyurethane foam with a density of 43 kg/mc. The panels are covered with 7/10 thick pre-painted smooth sheet metal.	
Top rail and side struts	Galvanized steel with a thickness of 25/10, supplied in the standard version painted black. They form a solid structure for the door, allowing easy maneuvering and ensuring high stability and tightness.	
Hinges	Made of black aluminium alloy, complete with pin with anti-fall system and double thrust bearing.	
Upper carriages	Three wheels in anti-noise nylon	
Closing	Internal cariglioni complete with high and low closing rods with reinforced toe and slide rod with PVC protection, made of galvanized steel and painted black. Central floor closure via PVC skirting.	
Seals	Anti-aging black EPDM natural rubber seals between the doors to ensure a 50 mm anti-schiacciamento space and allow a perfect closure.	
Aluminium profiles	Fixed in the upper and lower part of the doors, black, with special joint for the insertion of nylon brushes to ensure a perfect closure.	

STRUCTURE		SLIDING FOLDING DOOR
Sizing	Width up to 11600 mm x Height 6000 mm	
Panels	Thickness of 52 mm, composed of internal perimeter frame in galvanized steel, insulated with high density polyurethane foam (43 kg/mc).	
Covering	Prepainted smooth sheet, thickness 7/10.	
Joint profiles	"H" profile in aluminium to join the panels in height; "C" profiles in aluminium for the upper and lower assembly of the panels.	
Top rail	Made of pressed steel with wall mounting brackets and sliding bearings.	
Lower guide	To be drowned on the floor, choice of various models available according to customer needs (supplied with positioning scheme).	
Floor sliding	Supporting wheels with double sealed chamber bearing at the bottom of the doors.	
Bottom closure	Nylon brush	
Side gaskets for closing	Anti-aging black EPDM natural rubber for perfect sealing	
Closing of the door	Internal racks complete with lower closing rods with reinforced toe and rod slides with PVC protection, galvanized steel and painted black.	

OPENING SYSTEM		FOLDING DOOR
Manual	Door supplied without automatic opening system.	
Set up	Door supplied with predisposition for the installation of an automatic opening system.	
Motorized	Door supplied with automatic opening system.	

OPENING SYSTEM		SLIDING FOLDING DOOR
Motorized	<p>Features of the automation:</p> <p>Operation: Automation with Present Man mode</p> <p>Motion control: The door can only be activated by pressing a wall button in the immediate vicinity of the door.</p> <p>Automation availability: Various automation options are available, which can be selected according to the door size.</p>	

MOTORISATION

FOLDING DOOR

Type	Mechanics realized with irreversible geared motors, power 300 W, with external carter. Includes telescopic arm with supports to transmit movement during opening and closing, as well as a control panel with "open-close" button. Recommended for doors with installation over light and with small/ medium openings.
------	---

MOTORISATION

SLIDING FOLDING DOOR


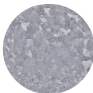
Mechanical drive by chain	For sliding doors with single or two opposite doors, with motor/ three-phase 380V mounted/ i on top bearing rail painted. Includes control accessory push-button open-close.
Mechanical motorization with rack	For sliding doors with single or two opposite doors, with motor/ three-phase 380V applied/ i in the wall. Recommended for doors with light installation or large openings. Includes push-button accessory open-close.

ACCESSORIES

FOLDING DOOR

Painting	Panels painted both on the outside and inside, with the possibility to choose from all the RAL colors in the GLG samples.
Additional coverings of doors	Coating options available on request, including 12/10 mm thick aluminum, 5/10 mm thick AISI 304 satin embossed stainless steel and wood-colored PVC.
Cariglione for external closure	Complete locking system with cylinder and external handle, mandatory for garage without secondary exits.
Pedestrian door without lower threshold	Pedestrian door without lower threshold, made with aluminum profile black color. Complete with panic handle, side latch, cylinder and external handle. Standard dimensions: 800/1200 mm x H 2100 mm.
Pedestrian door with lower threshold	Pedestrian door with a lower threshold of 90 mm, made with aluminum profile black color. Complete with handle, lock with key and possibility of customized dimensions (L depending on the door/ panel – H 2000/2100 mm). May include a panic bar.
Pedestrian door on broken door	Pedestrian door made on broken door, without lower crossbar. Complete with top stop profile, panic handle, high and low latch, cylinder and handle outside. Dimensions: width up to 1440 mm, height 2100 mm.
Grids with perimeter frame:	Grilles with perimeter frame, with aeration slats in pressed-bent sheet steel and painted black.
Porthole	Portholes available in different shapes (square, rectangular or circular) with black EPDM rubber perimeter seal or aluminum perimeter profile. Made of 5+5 mm thick glass (also double glazing) and available in different types such as transparent, satin and stop sol (light, bronze, gray).






Type of structure



Steel      Sheet metal

Galvanized      Prepainted smooth

Colors (RAL)



RAL 9006      RAL 9002      RAL 9010      RAL 5010      RAL 6005

max. height

# Account



max. width

Log in to  
download the .dwg

PLAN





Be a part of us

# Account

Remember that on our portal you can always take advantage of a number of useful features for your future logistics purchases.

[www.glgdoors.com](http://www.glgdoors.com)

